

1 2 3 4 5 6 7 8

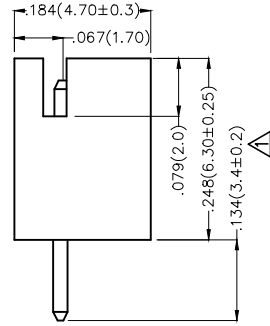
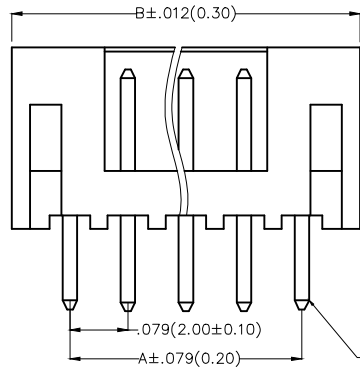
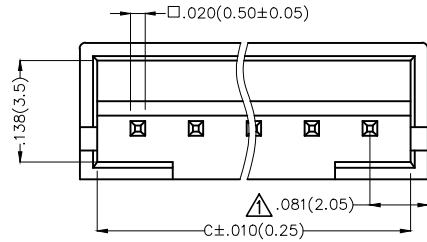
REV	LOCATIONS	DESCRIPTION	DATE	REVISER	APPD
1	△	Size changes	06/AUG/21	KATE	CHERRY
2	△	Flammability Rating change	15/AUG/24	KATE	LEO

Electrical

Current Rating: 2.0A AC(rms)/DC
 Voltage Rating: 100V AC(rms)/DC
 Contact Resistance: 10 mΩ Max
 Insulation Resistance: 1000 MΩ MIN
 Withstanding Voltage: 800V AC r.m.s
 Temperature Range—Operating: -25°C~+85°C

Material and Plating

Housing: PA66(UL 94V-0) △
 Contact Pin: Brass
 Plating: Full gold/ Full tin

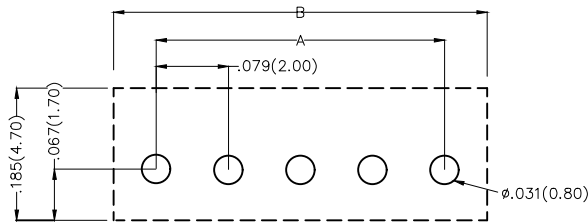


Circuit No.1

Ordering Information

FWF 200 15 — S XX S X 2 W1 B
 1 2 3 4 5 6 7 8 9 10

1	Category FWF—Wafer	2	Series Number 200—Pitch2.0mm	3	Distinction No. 15	4	Row Option S—Single Row	5	Circuits XX	6	Entry Angle S—180° Vertical
7	Plating 1—Gold Plated 2—Tin Plated	8	Material—Resin 2—PA66	9	Color—Resin W1—White	10	Packaging B—PE Bag				





Recommended P.C.Board Layout

 THIRD ANGLE PROJECTION	GENERAL TOLERANCES (UNLESS SPECIFIED)		APPROVE BY FRANK	DATE 18/JUN/13	PART NO. FWF20015-SXXSX2W1B	ITEM NO. FWF20015	 Leader Of Industry
	X.±.012(0.30)	X.±5'	CHECKED BY JACOB	DATE 18/JUN/13	TITLE Wire to Board (Wafer) Pitch 2.0mm 180° Vertical (DIP)		
DESIGN UNITS Inch (metric)	X.XX±.008(0.20)	.X'±2'	DRAWN BY CHERRY	DATE 18/JUN/13	THIS DRAWING CONTAINS INFORMATION THAT IS PROPRIETARY TO TXGA INDUSTRIAL ELECTRONICS(S.Z)CO.,LTD AND SHOULD NOT BE USED WITHOUT WRITTEN PERMISSION		
SCALE 5:1	SIZE A4	X.XXX±.004(0.10)	.XX'±0.5'				

1 2 3 4 5 6 7 8

REV	LOCATIONS	DESCRIPTION	DATE	REVISER	APPD

Material and Plating : Housing PA66 UL94V-0, Δ Tin-Plated all .					Material and Plating : Housing PA66 UL94V-0, Δ Gold Flash .				
Circuits (n)	Part No.	Dimensions(in/mm)			Circuits (n)	Part No.	Dimensions(in/mm)		
		A	B Δ	C			A	B Δ	C
2	FWF20015-S02S22W1B	.079(2.00)	.240(6.10)	.197(5.00)	2	FWF20015-S02S12W1B	.079(2.00)	.240(6.10)	.197(5.00)
3	FWF20015-S03S22W1B	.157(4.00)	.319(8.10)	.157(7.00)	3	FWF20015-S03S12W1B	.157(4.00)	.319(8.10)	.157(7.00)
4	FWF20015-S04S22W1B	.236(6.00)	.398(10.10)	.354(9.00)	4	FWF20015-S04S12W1B	.236(6.00)	.398(10.10)	.354(9.00)
5	FWF20015-S05S22W1B	.315(8.00)	.476(12.10)	.433(11.00)	5	FWF20015-S05S12W1B	.315(8.00)	.476(12.10)	.433(11.00)
6	FWF20015-S06S22W1B	.394(10.00)	.555(14.10)	.512(13.00)	6	FWF20015-S06S12W1B	.394(10.00)	.555(14.10)	.512(13.00)
7	FWF20015-S07S22W1B	.472(12.00)	.634(16.10)	.591(15.00)	7	FWF20015-S07S12W1B	.472(12.00)	.634(16.10)	.591(15.00)
8	FWF20015-S08S22W1B	.551(14.00)	.713(18.10)	.670(17.00)	8	FWF20015-S08S12W1B	.551(14.00)	.713(18.10)	.670(17.00)
9	FWF20015-S09S22W1B	.630(16.00)	.791(20.10)	.748(19.00)	9	FWF20015-S09S12W1B	.630(16.00)	.791(20.10)	.748(19.00)
10	FWF20015-S10S22W1B	.709(18.00)	.870(22.10)	.827(21.00)	10	FWF20015-S10S12W1B	.709(18.00)	.870(22.10)	.827(21.00)
11	FWF20015-S11S22W1B	.787(20.00)	.949(24.10)	.906(23.00)	11	FWF20015-S11S12W1B	.787(20.00)	.949(24.10)	.906(23.00)
12	FWF20015-S12S22W1B	.866(22.00)	1.028(26.10)	.984(25.00)	12	FWF20015-S12S12W1B	.866(22.00)	1.028(26.10)	.984(25.00)
13	FWF20015-S13S22W1B	.945(24.00)	1.106(28.10)	1.063(27.00)	13	FWF20015-S13S12W1B	.945(24.00)	1.106(28.10)	1.063(27.00)
14	FWF20015-S14S22W1B	1.024(26.00)	1.185(30.10)	1.142(29.00)	14	FWF20015-S14S12W1B	1.024(26.00)	1.185(30.10)	1.142(29.00)
15	FWF20015-S15S22W1B	1.102(28.00)	1.264(32.10)	1.220(31.00)	15	FWF20015-S15S12W1B	1.102(28.00)	1.264(32.10)	1.220(31.00)
16	FWF20015-S16S22W1B	1.181(30.00)	1.343(34.10)	1.299(33.00)	16	FWF20015-S16S12W1B	1.181(30.00)	1.343(34.10)	1.299(33.00)

 THIRD ANGLE PROJECTION	GENERAL TOLERANCES (UNLESS SPECIFIED)		APPROVE BY	DATE	PART NO.	ITEM NO.	 Leader Of Industry	
	X.±.012(0.30)	X.±5'	FRANK	18/JUN/13	FWF20015-SXXSX2W1B	FWF20015		
	X.X±.008(0.20)	.X'±2'	CHECKED BY	DATE	TITLE	REV 2		SHEET NO. 2/2
	X.XX±.006(0.15)	.XX'±1"	JACOB	18/JUN/13	Wire to Board (Wafer) Pitch 2.0mm 180° Vertical (DIP)	THIS DRAWING CONTAINS INFORMATION THAT IS PROPRIETARY TO TXGA INDUSTRIAL ELECTRONICS(S.Z)CO.,LTD AND SHOULD NOT BE USED WITHOUT WRITTEN PERMISSION		
SCALE	SIZE	X.XXX±.004(0.10)	.XXX'±0.5'	DRAWN BY	DATE			
5:1	A4			CHERRY	18/JUN/13			